



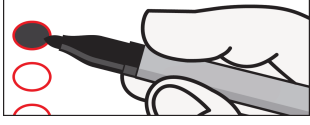
**Official Coordinated Election Ballot**  
**Gunnison County, Colorado**  
**Tuesday, November 2, 2021**

Ballot Type: GCFPO

*Kathy Simillion*  
 Clerk and Recorder

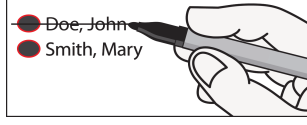
**Instructions:**

**Voting for a named candidate:**



To vote for a candidate, completely fill in the oval to the left of your choice using blue or black ink.

**Making a correction:**



If you make an error, draw a bold line through the oval and candidate name that you marked by mistake, and completely fill in the oval next to the correct choice.

**WARNING:** Any person who, by use of force or other means, unduly influences an eligible elector to vote in any particular manner or to refrain from voting, or who falsely makes, alters, forges, or counterfeits any mail ballot before or after it has been cast, or who destroys, defaces, mutilates, or tampers with a ballot is subject, upon conviction, to imprisonment, or to a fine, or both. Section 1-7.5-107(3)(b), C.R.S.

**Special District Ballot Measures**

**GUNNISON COUNTY FIRE PROTECTION DISTRICT 7A**

SHALL GUNNISON COUNTY FIRE PROTECTION DISTRICT TAXES BE INCREASED UP TO \$1.2 MILLION ANNUALLY (FOR COLLECTION IN CALENDAR YEAR 2022) AND BY SUCH ADDITIONAL AMOUNTS RAISED ANNUALLY THEREAFTER BY AN AD VALOREM PROPERTY TAX MILL LEVY IMPOSED AT A RATE OF FIVE AND ONE-HALF (5.5) MILLS IN ORDER TO FUND DISTRICT CAPITAL NEEDS AND TO MEET THE OPERATIONAL COSTS OF PROVIDING FIRE PROTECTION, RESCUE AND OTHER EMERGENCY SERVICES INCLUDING,

- CONSTRUCTING A NEW FIRE STATION; AND
- UPGRADING AND MAINTAINING FIRE VEHICLES, APPARATUS AND EMERGENCY EQUIPMENT, WHICH MILL LEVY RATE INCREASE SHALL BE IN ADDITION TO THE MILL LEVY CURRENTLY IMPOSED BY THE DISTRICT; AND

SHALL THE REVENUE FROM THE MILL LEVY RATE AUTHORIZED ABOVE CONSTITUTE VOTER-APPROVED REVENUE CHANGES WITHIN THE MEANING OF ARTICLE X, SECTION 20 OF THE COLORADO CONSTITUTION AND AN EXCEPTION TO THE LIMITATIONS SET FORTH IN SECTION 29-1-301 OF THE COLORADO REVISED STATUTES?

- YES/FOR
- NO/AGAINST

SAMPLE

+

This side has been intentionally left blank.

SAMPLE

