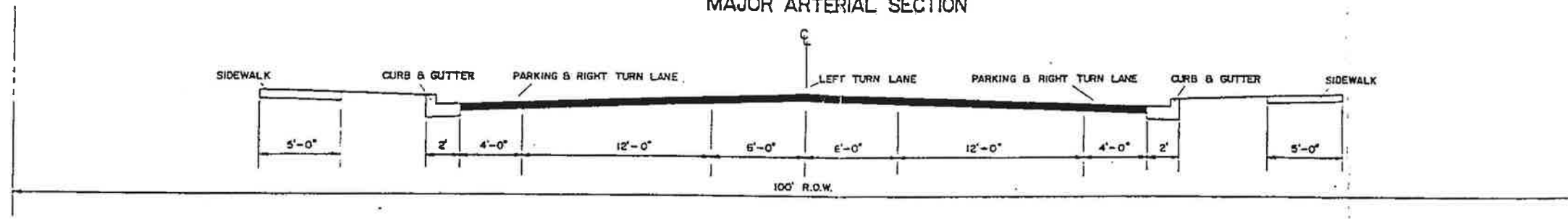
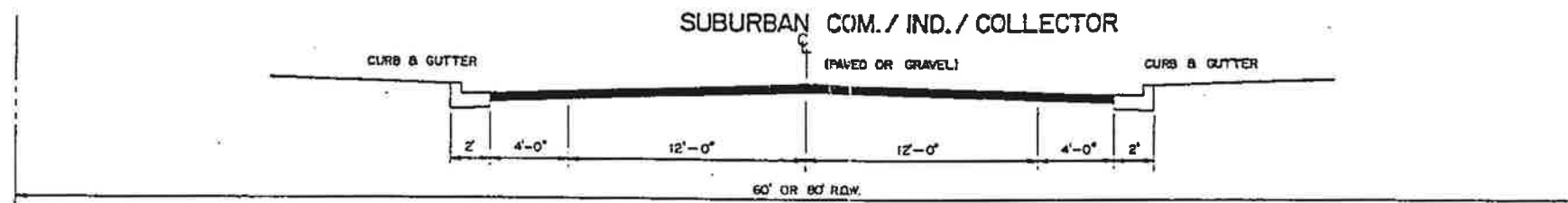


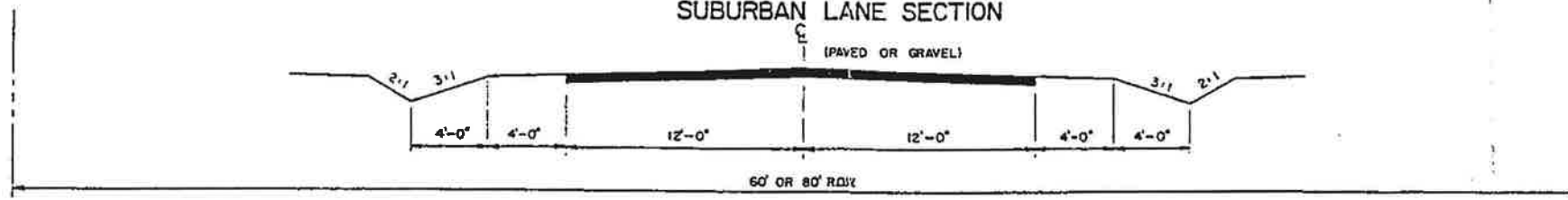
MAJOR ARTERIAL SECTION



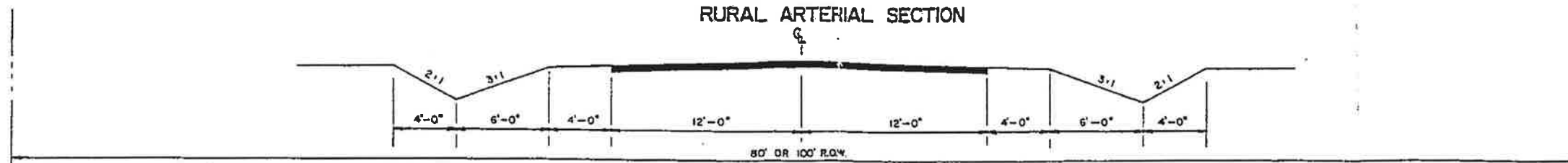
SUBURBAN COM. / IND. / COLLECTOR



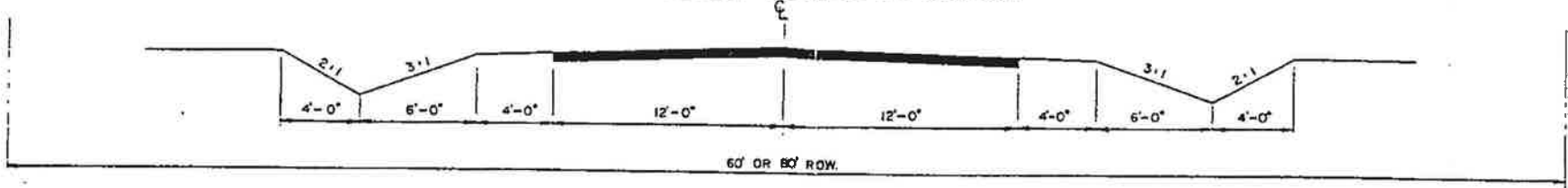
SUBURBAN LANE SECTION



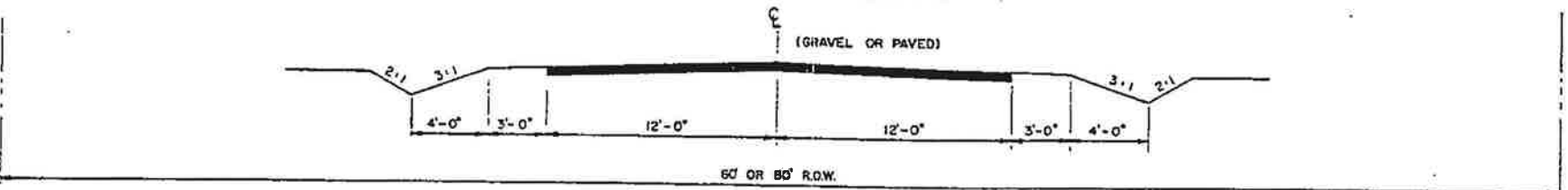
RURAL ARTERIAL SECTION



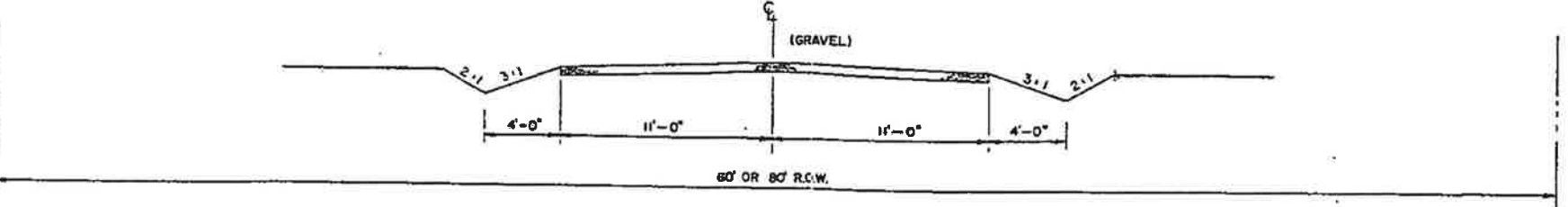
RURAL COLLECTOR SECTION



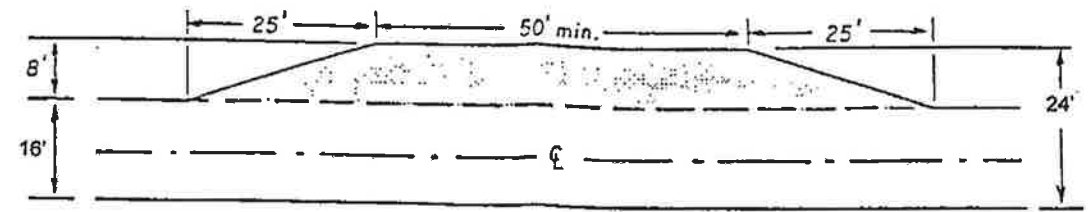
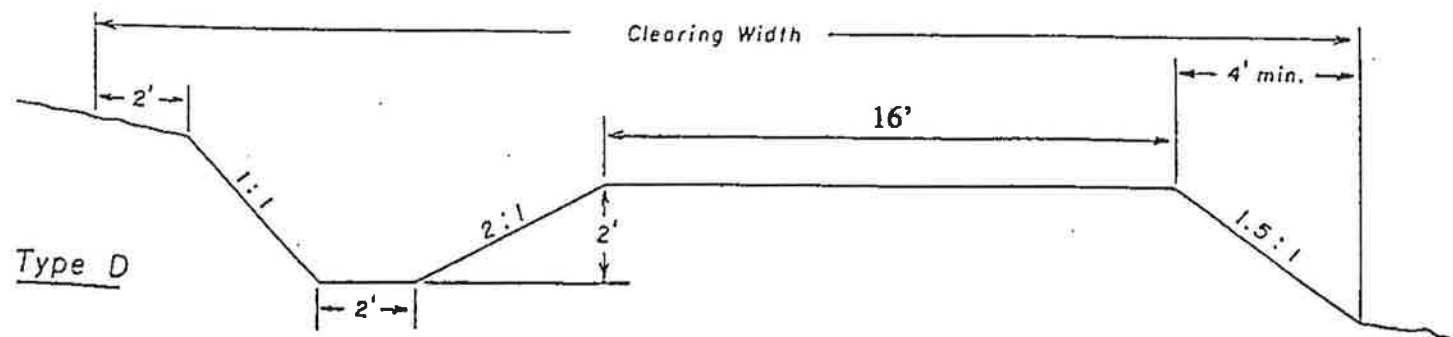
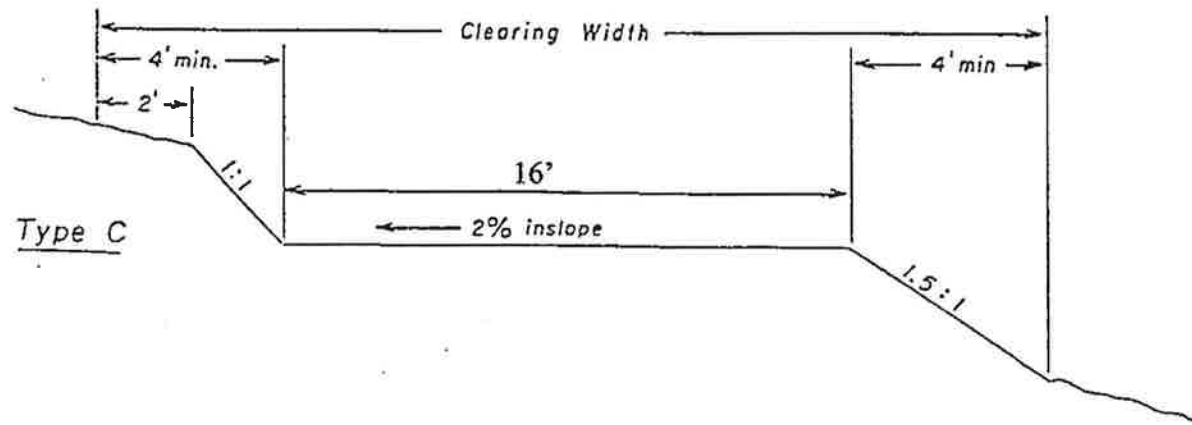
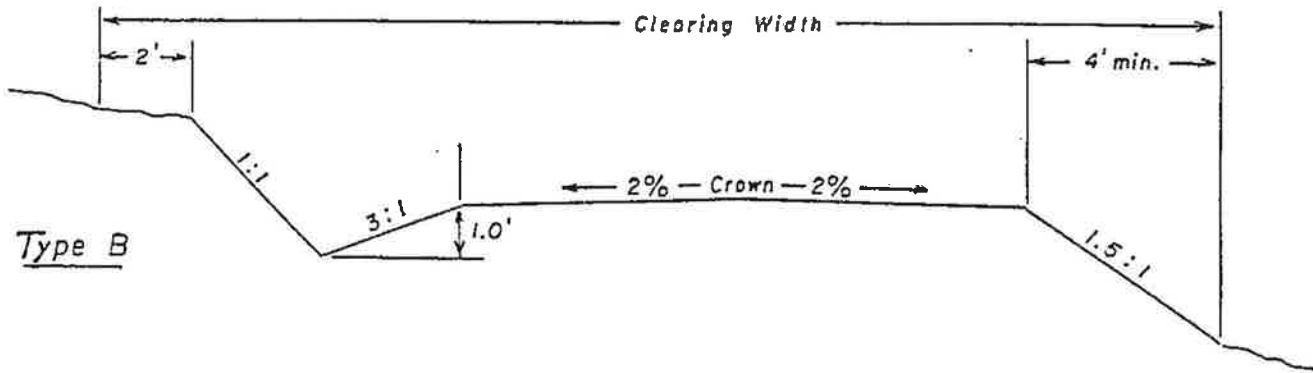
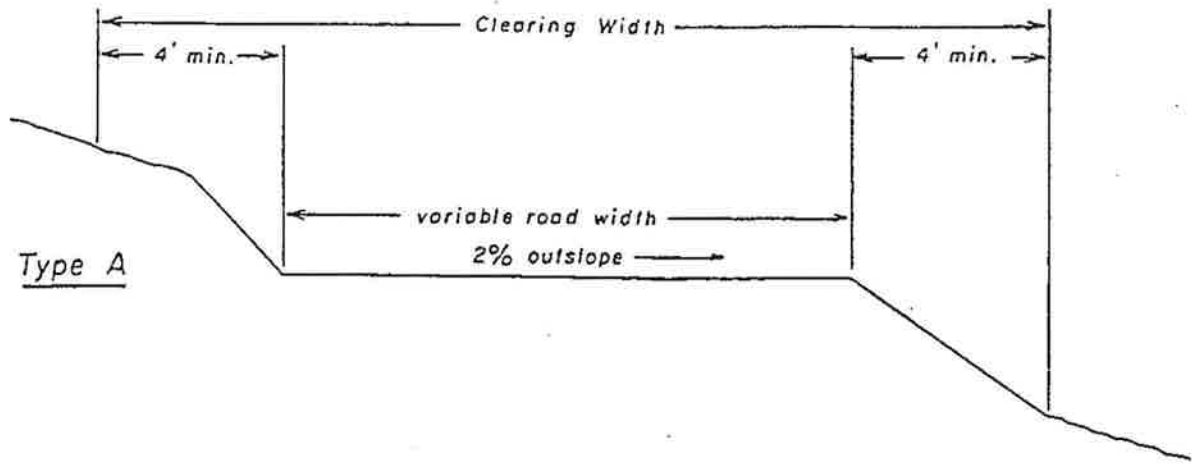
RURAL LOCAL SECTION



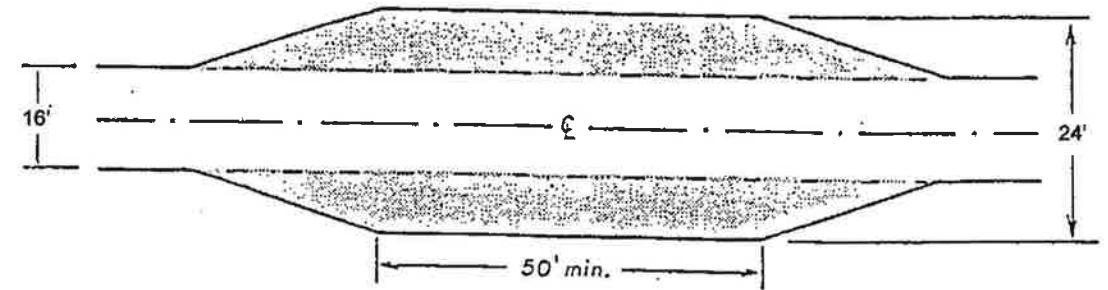
RURAL LANE SECTION



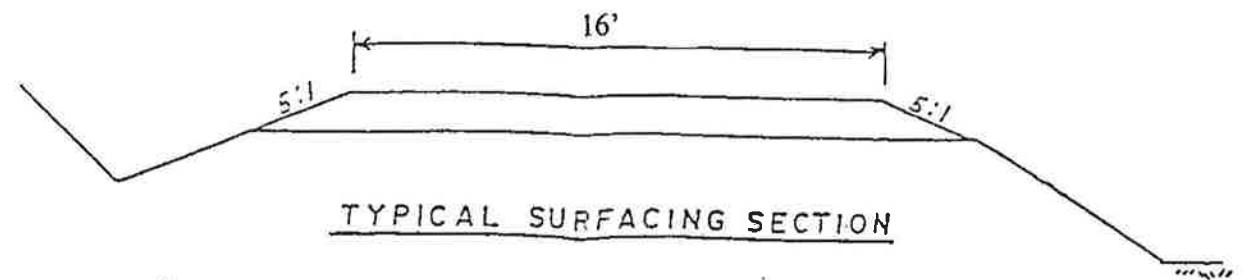
LOCAL INTERMITTENT SECTION



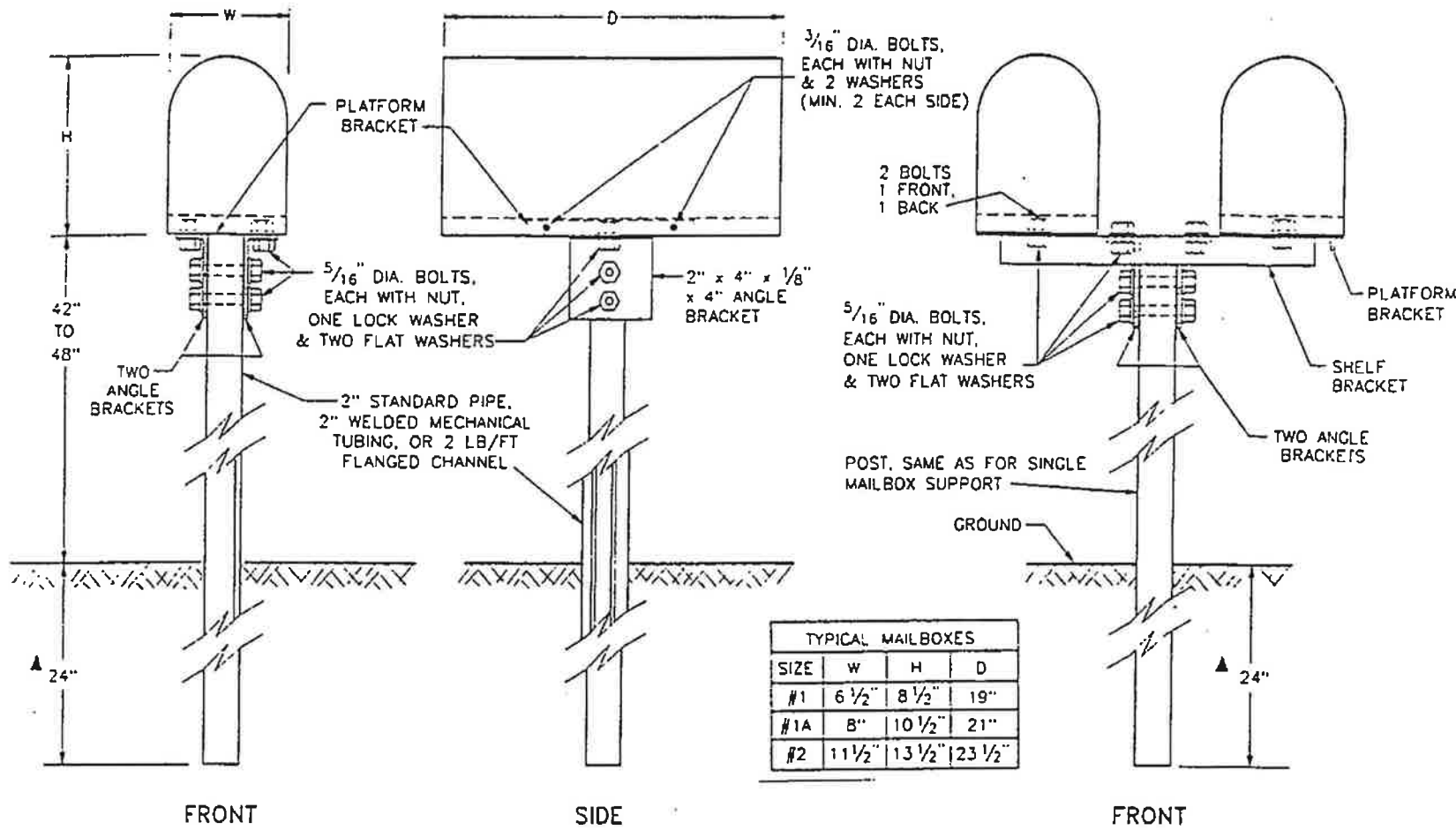
Typical Turnout



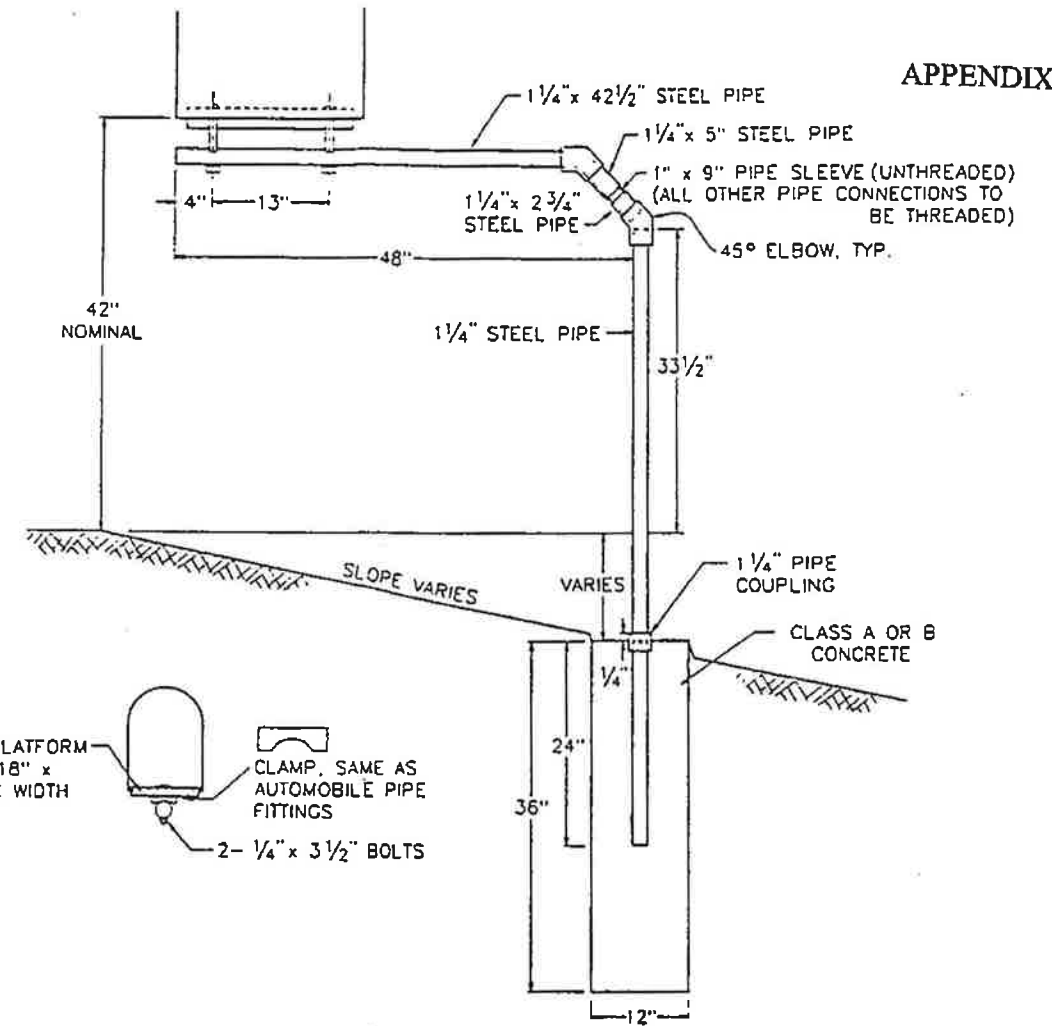
Typical Turnout



TYPICAL SURFACING SECTION

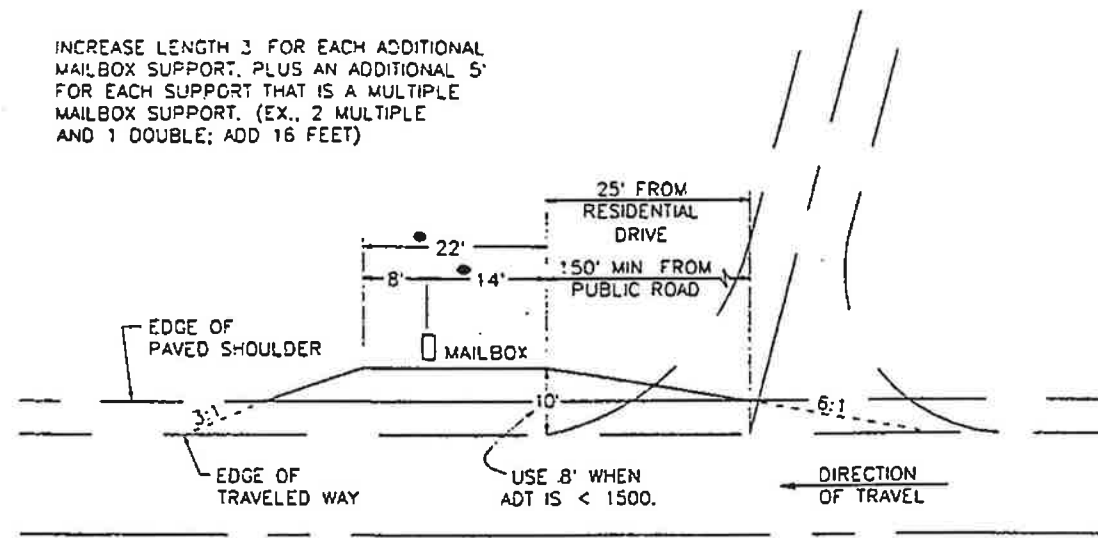


SINGLE (TYPE 1) AND DOUBLE (TYPE 2) MAILBOX SUPPORTS

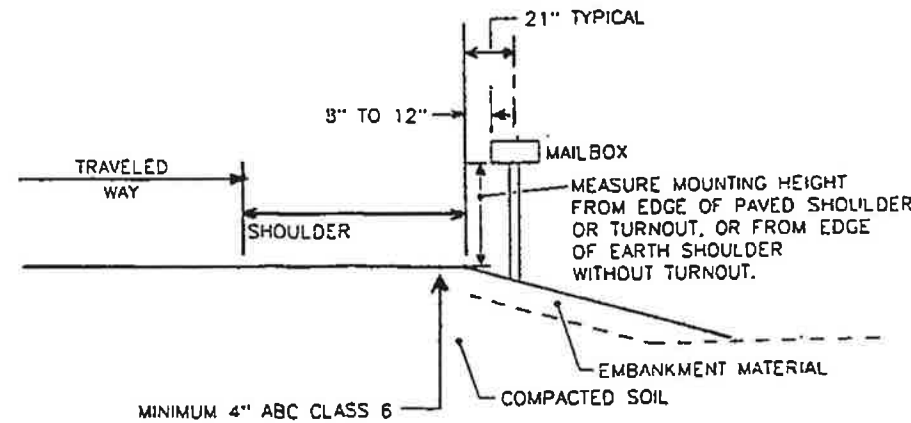


CANTILEVER (TYPE 4) MAILBOX SUPPORT

INCREASE LENGTH 3 FOR EACH ADDITIONAL MAILBOX SUPPORT, PLUS AN ADDITIONAL 5' FOR EACH SUPPORT THAT IS A MULTIPLE MAILBOX SUPPORT. (EX., 2 MULTIPLE AND 1 DOUBLE; ADD 16 FEET)



MAILBOX TURNOUT



TYPICAL SECTION

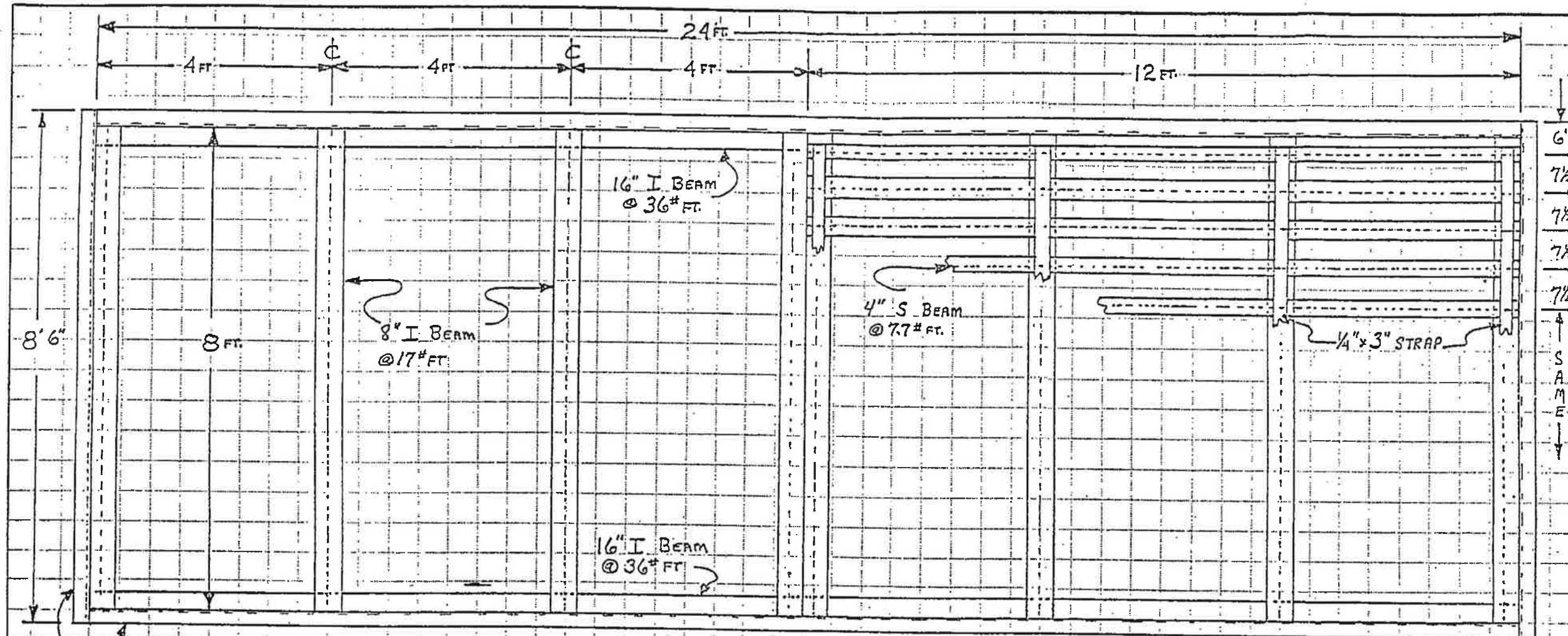
GENERAL NOTES

A SINGLE MAILBOX SHALL BE RESET AT THE FINAL DESIGNATED LOCATION ON A NEW TYPE 1 SUPPORT. TWO MAILBOXES RESET AT THE SAME LOCATION SHALL BE RESET ON ONE DOUBLE (TYPE 2) SUPPORT OR ON TWO SINGLE (TYPE 1) SUPPORTS AS DESIGNATED.

POSTS, BRACKETS, AND ALL MOUNTING HARDWARE SHALL BE GALVANIZED IN ACCORDANCE WITH AASHTO M 232 AND M 111, EXCEPT THE WELDED MECHANICAL TUBING COATING SHALL BE G-90 OR EQUIVALENT PER ASTM A 525. TWO INCH OUTSIDE DIAMETER, 14 GAGE WELDED MECHANICAL TUBING SHALL CONFORM TO THE REQUIREMENTS OF ASTM A 513.

ON ROADS WITH CURB AND GUTTER, THE MAILBOX SUPPORT SHALL BE LOCATED IN THE GROUND SO THE FRONT OF THE MAILBOX SHALL BE 8" TO 12" BACK FROM THE CURB FACE. THE HEIGHT SHALL BE 42" TO 48" MEASURED FROM THE GUTTER FLOW LINE TO THE BOTTOM OF THE MAILBOX.

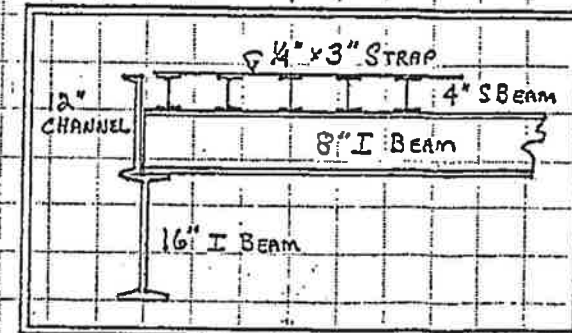
THE GROUND SURROUNDING THE MAILBOX SUPPORTS SHALL BE FIRM, UNDISTURBED GROUND, OR WELL COMPACTED REGRADED SOIL. THE SUPPORTS ARE NORMALLY DRIVEN, BUT THEY MAY BE PLACED IN A DUG HOLE WITH WELL COMPACTED BACKFILL.



12" CHANNEL  
@ 20.7# FT  
ALL 4 SIDES  
FLANGE OUT

MATERIAL LIST

2 PCS	- 24' EA. 16" I BEAM @ 36# FT	48 FT
2 PCS	- 24' EA. 12" CHANNEL @ 20.7# FT	65 FT.
2 PCS	- 8'6" EA. 12" CHANNEL @ 20.7# FT	
8 PCS	- 8' EA. 8" I BEAM @ 17# FT	64 FT
26 PCS	- 2' EA. 4" S BEAM @ 7.7# FT	312 FT
8 PCS	- 8' EA. 1/4" x 3" STRAP	64 FT



FORM 204 Available from N.E.S.I. Inc. Townsend, Mass 01470

1-1-81 DWR